



WE KNOW AIR FLOW

**AIRVENT**



# **VENTILATION PRODUCT CATALOG**

*National and Regional*

*Intake, Exhaust, Foundation and Accessory Solutions*

[GIBALTARBUILDINGPRODUCTS.COM](http://GIBALTARBUILDINGPRODUCTS.COM)

VC12424C

**GIBALTAR**  
BUILDING ACCESSORIES DIVISION

## Discover Premium Ventilation Solutions Tailored to Your Needs

At the Gibraltar Building Accessories Division, our AirVent ventilation brand offers a trusted, time-tested line of solution-driven products to meet your exhaust, intake, and foundation ventilation needs. We specialize in delivering high-performance ventilation solutions preferred by professional contractors and homeowners alike. With a robust nationwide presence and regionally tailored offerings, our products are designed to address local preferences and endure the unique weather challenges of each area.

Whether you're tackling projects in the humid South, the arid West, or the frosty North, our ventilation systems provide unmatched durability, efficiency, and comfort. To make your product selection seamless, we've included a helpful legend throughout this catalog.

This guide will direct you to the appropriate regional business unit for placing orders or obtaining additional information.

Our localized teams are ready to help you with product recommendations and custom solutions or provide educational insights that maximize your ventilation sales.



### National Availability

**AirVent**  
airventcustomerservice@gibraltar1.com  
(800) 247-8368 (800-AIR-VENT)

### Midwest Availability

**Appleton Supply**  
AppletonCustomerService@gibraltar1.com  
(800) 558-3414

**QAP**  
QAPCustomerService@gibraltar1.com  
(800) 550-1667

### Western States Availability

**Award Metals**  
AwardCustomerService@gibraltar1.com  
(800) 576-9810

### Pacific Northwest Availability

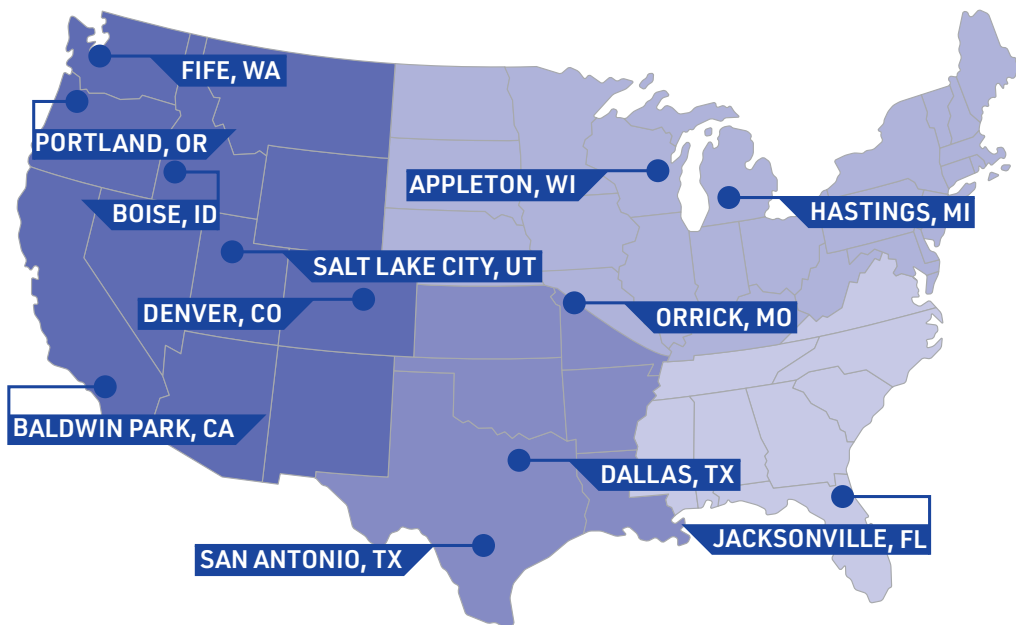
**Norwesco**  
NorwescoCustomerService@gibraltar1.com  
(800) 426-0940

### Southwest Availability

**DOT**  
DOTCustomerService@gibraltar1.com  
(855)-213-6804

### Southeastern Availability

**SEMCO**  
SEMCOCustomerService@gibraltar1.com  
(800) 874-0335



<b>Intake</b>	One half of your balanced ventilation system, provides fresh air to your attic	<b>Foundation</b>	Prevents moisture in your foundation/crawlspace
<b>Exhaust</b>	Allows for exiting of hot air from your attic, needs to be balanced with intake	<b>Accessory</b>	Ventilation accessory or roofing tool

Ridge Vents	
ShingleVent® II.....	4
ShingleVent® II with Nails.....	4
ShingleVent® II-9A.....	4
ShingleVent® II-9.....	4
VenturiVent® Plus with Nails.....	5
Continuous Unfiltered Ridge Vent.....	5
Universal Ridge Vent.....	5

Rolled Ridge Vents	
ShingleVent Roll Filtered.....	6
ShingleVent Roll Unfiltered.....	6
Peak Performer I.....	6
Peak Performer II.....	6
VenturiVent® Roll.....	7
RidgeHawk™.....	7

Plastic Static Vents	
50 Square Inch.....	8
SLP61.....	8
61 Square Inch.....	8
RVP61.....	8
PRV-50.....	8
AF-50.....	8
AF-92 92 Square Inch.....	9
B-144 Plastic Dome.....	9
25" Plastic Dome Replacement.....	9
SLP150.....	9

Galvanized Static Vents	
RV38 Static Vent.....	10
RVO38 Static Vent.....	10
RVG 40.....	10
RV49 Static Vent.....	10
Standard RVO38.....	10
Torched Down RVO38.....	10
RVO49 Static Vent.....	11
RVG 50.....	11
RVG 51.....	11
RVG 55.....	12
B-144 Metal Dome.....	12
25" Metal Dome Replacement.....	12

Aluminum Static Vents	
RVAL 50.....	13
RVA 51.....	13
SLA.....	13
EconoVent.....	14
T-Top.....	14
Half Round Dormer.....	14
Soft Flange Dormer.....	14
Low Profile Dormer.....	15
24" Stealth Vent.....	15
Weather Vent™.....	15
T-Top Sub-Base.....	15
Code Caps & Bases.....	15
Vent Caps.....	15

Roof Jacks & Pipe Flashing	
Gooseneck Vents.....	16
Total Jack™.....	16
Vent Adapter.....	16
FHA Pipe Flashing.....	16

Wind Turbines	
12" Internal Brace Turbine.....	17
12" External Brace Turbine.....	17
14" Internal Brace Turbine.....	17
14" External Brace Turbine.....	17

Roof-Mount Attic Ventilators	
Built-in Humidistat/Thermostat.....	18
Pre-Wired Humidistat/Thermostat.....	18
Pre-Wired Thermostat.....	18
Solar Powered Attic Ventilator.....	19

Gable-Mount Attic Ventilators	
Gable Mount Power Attic Ventilators.....	20
Solar Powered Gable Mount Power Attic Ventilators.....	20
Automatic Gable Shutter.....	20

Gable Louvers	
Rectangular Gable Louver.....	21
Norwesco® Reversible Vent.....	21

Bath & Dryer Vents	
Plastic Bath and Dyer Vent.....	22
Plastic Stem Vent.....	22
Galvanized Steel Bath and Dryer Vent.....	22
Metal Stem Vent.....	22
Adjustable Type B Gas Cap.....	22

Bath & Dryer Accessories	
Ventilating Access Door.....	23
Tub Access Door.....	23
Dryer Cap.....	23

Sidewall Vents	
Flat Screen Vent.....	23
Two Way Vents.....	23

Undereave Vents	
16" x 4".....	24
16" x 6".....	24
16" x 8".....	24
Mini Louver.....	24

Eave & Soffit Vents	
Soffit Vent.....	25
Flush Mount Soffit Vent.....	25
Flush Mount Soffit Vent.....	25
Eave Vent.....	25
Perforated PVC Continuous Soffit.....	25
Louvered Aluminum Continous Soffit.....	25

Intake Vents	
The Edge™ Vent.....	26
Pro Flow™ Vented Drip Ege.....	26
VSR92 9/16" Vented Soffit Receiver.....	26
VSR1 1" Vented Soffit.....	26

Powered Foundation Vents	
Automatic Foundation Vent.....	27
Series 6, High Output.....	27
Series 5, High Output.....	27
Controls Kit.....	27
Plastic Vent Well.....	27

Foundation Vents	
Replacement Automatic Foundation Vent.....	28
Manual Replacement Foundation Vent.....	28
Stamped Aluminum Sliders.....	28
Stamped Foundation Vent.....	28
Damper Doors · Foundation Vent Clips.....	28
Rim Vent.....	28
Pour-In-Place Foundation Vent.....	29
Foam Plugs.....	29
Plastic Dampers and Sliders.....	29

Roof Patch	
Kwik-Plug™.....	30

## ShingleVent® II



12" Filtered Shingle-Over Ridge Vent

Model	Length	PCS/ CTN	CTNS/ Pallet	Color
<b>SHFVBL</b>	4'	10	15	Black

- 18 sq. in. NFA per linear ft.
- External wind baffle enhances airflow
- Built-in ventilating end plugs
- 2/12 to 16/12 roof pitch
- Internal weather filter helps prevent weather, insect, and dust infiltration
- Limited lifetime warranty; 5-year Replacement Plus™ protection



## ShingleVent® II with Nails



12" Filtered Shingle-Over Ridge Vent with Nails

Model	Length	PCS/ CTN	CTNS/ Pallet	Color
<b>SHFVBLN</b>	4'	10	15	Black

- 18 sq. in. NFA per linear ft.
- External wind baffle enhances airflow
- Built-in ventilating end plugs
- 2/12 to 16/12 roof pitch
- Internal weather filter helps prevent weather, insect, and dust infiltration
- Ring-shanked nails included
- Limited lifetime warranty; 5-year Replacement Plus™ protection



## ShingleVent® II-9A



9" Filtered Shingle-Over Ridge Vent, Class A Fire Rated

Model	Length	PCS/ CTN	CTNS/ Pallet	Color
<b>CLASH9CC</b>	4'	10	20	Charcoal

- Approved for Class A roof decks
- 9" wide for cedar shake or enhanced cap shingles
- 16 sq. in. NFA per linear ft.
- External wind baffle enhances airflow
- Built-in ventilating end plugs
- 3/12 to 12/12 roof pitch
- Internal weather filter helps prevent weather, insect, and dust infiltration
- Ring-shanked nails included
- Limited lifetime warranty; 5-year Replacement Plus™ protection



## ShingleVent® II-9



9" Filtered Shingle-Over Ridge Vent with Nails

Model	Length	PCS/ CTN	CTNS/ Pallet	Color
<b>SHFV9CC</b>	4'	10	20	Charcoal

- 9" wide for cedar shake or enhanced cap shingles
- 16 sq. in. NFA per linear ft.
- External wind baffle enhances airflow
- Built-in ventilating end plugs
- 3/12 to 12/12 roof pitch
- Internal weather filter helps prevent weather, insect, and dust infiltration
- Ring-shanked nails included
- Limited lifetime warranty; 5-year Replacement Plus™ protection



## VenturiVent® Plus with Nails

12" Shingle-Over Ridge Vent with Nails



Model	Length	PCS/ CTN	CTNS/ Pallet	Color
VVPN / 84719	4'	10	15	Black

- 18 sq. in. NFA per linear ft.
- External wind baffle enhances airflow
- Built-in ventilating end plugs
- 2/12 to 16/12 roof pitch
- Ring shank nails included
- Limited lifetime warranty; 5-year Replacement Plus™ protection



## Continuous Unfiltered Ridge Vent

Aluminum Ridge Vent



Model	Length	PCS/ CTN	CTNS/ Pallet	Color
RV8BL	RV800010	8'	12	Black
RV8BR	RV800080	8'	12	Brown
FVL104/84426 End Plug	-	12	-	Black

- Embossed aluminum
- 18 sq. in. NFA per linear ft.



## Universal Ridge Vent



Removes superheated attic air. Self-flashing. Can be installed on new or existing construction. Embossed Aluminum. 10 ft. lengths.

Description	Black	Brown	Gray	White	QTY
10 ft. Universal Ridge Vent	84403	84405	84402	84399	12
End Plug/Connector - Rubber	84426	-	-	-	12
End Plug/Connector - Foam	40237	-	-	-	24



## ShingleVent Roll Filtered

11.75" Shingle-Over Rolled Ridge Vent Filtered



Model	Length	PCS/ CTN	CTNS/ Pallet	Color
<b>SHVROLL/84737</b>	30'	1	24	Black

- 11 sq. in. NFA per linear foot
- Nail Gun Friendly
- Two coils of ring-shanked nails included
- 2/12 to 16/12 roof pitch
- Internal weather filter helps prevent weather, insect, and dust infiltration
- Newly designed baffle & debris-reducing airflow slots
- Built-in ventilating end plugs every 6"
- Limited lifetime warranty; 5-year Replacement Plus™ protection



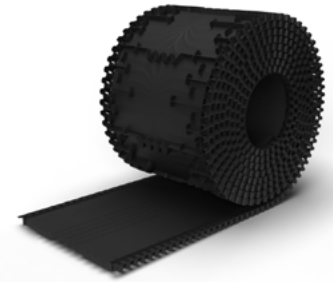
## ShingleVent Roll Unfiltered

11.75" Shingle-Over Rolled Ridge Vent Unfiltered



Model	Length	PCS/ CTN	CTNS/ Pallet	Color
<b>SHVROLL/84736</b>	30'	1	24	Black

- 11 sq. in. NFA per linear foot
- Nail Gun Friendly
- Two coils of ring-shanked nails included
- 2/12 to 16/12 roof pitch
- Newly designed baffle & debris-reducing airflow slots
- Built-in ventilating end plugs every 6"
- Minimal rollout recoil
- Limited lifetime warranty; 5-year Replacement Plus™ protection



## Peak Performer I

12" Shingle-Over Rolled Ridge Vent with Nails



Model	Length	PCS/ CTN	CTNS/ Pallet	Color
<b>PPI/ 84731</b>	28'	1	25	Black

- 12 sq. in. NFA per linear ft.
- External wind baffle enhances airflow
- Built-in ventilating end plugs
- Nail gun friendly
- 3/12 to 12/12 roof pitch
- Two coils of ring-shanked nails included
- Limited lifetime warranty; 5-year Replacement Plus™ protection



## Peak Performer II

12" Filtered Shingle-Over Rolled Ridge Vent with Nails



Model	Length	PCS/ CTN	CTNS/ Pallet	Color
<b>PPII/ 84732</b>	28'	1	25	Black

- 12 sq. in. NFA per linear ft.
- External wind baffle enhances airflow
- Built-in ventilating end plugs
- Nail gun friendly
- 3/12 to 12/12 roof pitch
- Two coils of ring-shanked nails included
- Internal weather filter helps prevent weather, insect, and dust infiltration
- Limited lifetime warranty; 5-year Replacement Plus™ protection



## VenturiVent® Roll

12" Shingle-Over Rolled Ridge Vent



Model	Length	PCS/ CTN	CTNS/ Pallet	Color
VVR20/ 84735	20'	1	24	Charcoal

- 12 sq. in. NFA per linear ft.
- External wind baffle enhances airflow
- Built-in ventilating end plugs
- Nail gun friendly
- 3/12 to 12/12 roof pitch
- Limited lifetime warranty; 5-year Replacement Plus™ protection



tdi



## RidgeHawk™

11" Rolled Entagled Mesh Vent with Nails

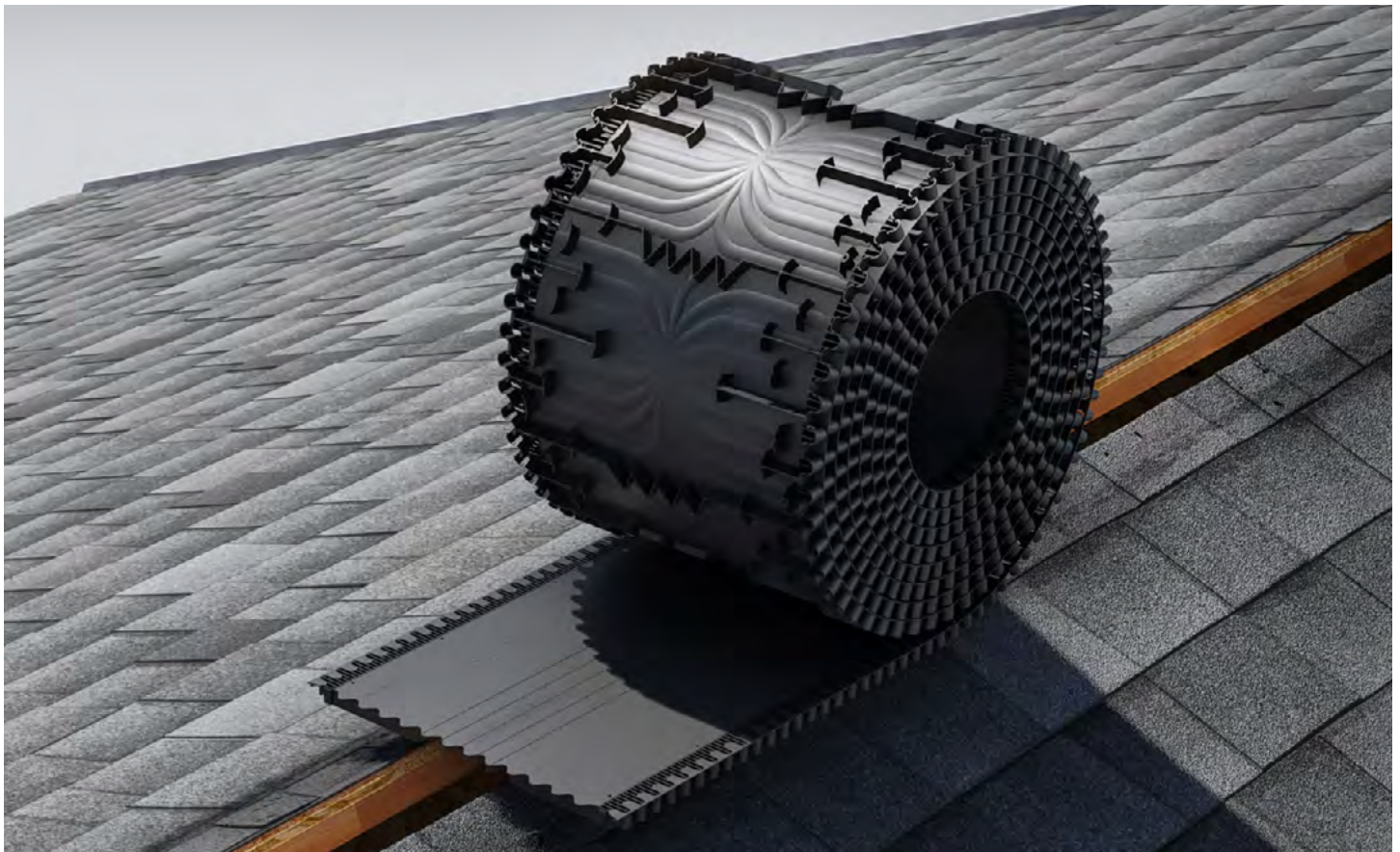


Model	Length	PCS/ CTN	CTNS/ Pallet	Color
RH20/ 84747	20'	1	36	Black
RH50/ 84748	50'	1	15	Black

- For use on horizontal ridge and diagonal hips
- 15 sq. in. NFA per linear ft.
- Breathable fabric helps prevent weather, dust, and insect infiltration
- Resistant to wind-driven rain infiltration per TAS 100(A) testing
- 3/12 to 18/12 roof pitch
- Coil of nails included
- Limited lifetime warranty



tdi



## 50 Square Inch Plastic Vent



	Black	Brown	Dark Brown	Gray	Weathered Gray
<b>PRV-50</b>	559012	559010	559011	559013	559015
<b>AF-50</b>	559453	559450	559454	559451	559452



**PRV-50**



**AF-50**

## SLP61

Slant Black Plastic



Model	Part	PCS/ CTN	CTNS/ Pallet	Color
<b>SLP61BL</b>	90121	6	24	Black
<b>SLP61BR</b>	90122	6	24	Brown
<b>SLP61GR</b>	90123	6	24	Gray
<b>SLP61WW</b>	90125	6	24	Weatherwood



## 61 Square Inch

Slant Black Plastic



Model	PCS/ CTN	Color
<b>90121</b>	6	Black

- 16.5" x 19.5" flashing
- 61 sq. in. NFA per vent
- 9" square opening
- Rust-free screen helps prevent insects from entering attic
- Limited lifetime warranty



## RVP61

Slant Black Plastic



Model	Part	PCS/ CTN	CTNS/ Pallet	Color
<b>RVP61BL</b>	90155	10	16	Black
<b>RVP61BR</b>	90156	10	16	Brown
<b>RVP61GR</b>	90157	10	16	Gray
<b>RVP61WW</b>	90159	10	16	Weatherwood



- 17" x 18" flashing
- 61 sq. in. NFA per vent
- Rain diverter throat
- 9" square opening
- Limited lifetime warranty







## AF-92 92 Square Inch



Plastic Vent

Black	Brown	Dk. Brown	Gray	Translucent	Weathered Gray	QTY
559471	559468	559472	559469	559445	559470	8



## B-144 Plastic Dome



Round Plastic

Model	Part	PCS/ CTN	CTNS/ Pallet	Color
<b>B144GR</b>	97695	1	30	Gray

- Round plastic
- 24" x 24" flashing
- 144 sq. in NFA per Vent
- 14" round opening
- Limited lifetime warranty



## 25" Plastic Dome Replacement

Model	Part	PCS/ CTN	Color
<b>DOMPLGR</b>	35010	1	Gray



## SLP150



Slant Black Plastic

Model	Part	PCS/ CTN	CTNS/ Pallet	Color
<b>SLP150BL</b>	90141	2	21	Black
<b>SLP150WW</b>	90145	2	21	Weatherwood

- 21.5" x 25" flashing
- 150 sq. in NFA per vent
- 13" square opening
- Rust-free screen helps prevent insects from entering attic
- Limited lifetime warranty

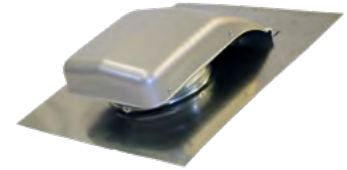


## RV38 Static Vent

Slant Back - 38 Square Inch



Galvanized	Black	Gray	White	Dark Brown	QTY
558011	557167	557157	556167	556157	6



## RVO38 Static Vent

Square - 38 Square Inch



	Galvanized	Black	Dark Brown	Gray	White	QTY
<b>Standard</b>	556042	557059	556159	557159	556150	6
<b>Torch Down</b>	-	557168	556186	557171	557164	4



Standard RVO38



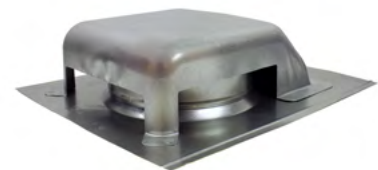
Torched Down RVO38

## RVG 40

Slant Galvanized



Model	Part #	PCS/ CTN	CTNS/ Pallet	Color
<b>RVG40ML</b>	RVG40000	9	24	Mill
<b>RVG40BL</b>	RVG40010	9	24	Black
<b>RVG40BR</b>	RVG40080	9	24	Brown
<b>RVG40WW</b>	RVG400G0	9	24	Weatherwood



- Heavy-duty galvanized steel construction
- Screen helps prevent insects from entering attic
- Low profile, compact design
- 40 sq. in. NFA per vent
- 7 1/2" round opening
- Limited lifetime warranty

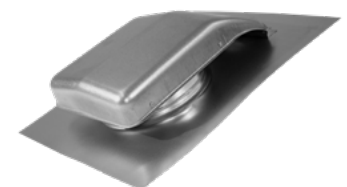


## RV49 Static Vent

Slant Back - 49 Square Inch



Galvanized	Black	Dk. Brown	Gray	White	QTY
558012	557153	556154	557154	557145	6



## RVO49 Static Vent

Square Top - 49 Square Inch



Black	Dark Brown	Gray	QTY
557160	556158	557158	6



## RVG 50

Filtered Slant Back Galvanized



Model	Part #	PCS/ CTN	CTNS/ Pallet	Color
RVGLFMF	RVGL50F00	10	16	Mill
RVGLFBL	RVGL50F10	10	16	Black
RVGLFBR	RVGL50F80	10	16	Brown
RVGLFWW	RVGL50FG0	10	16	Weatherwood



- Heavy-duty galvanized steel construction
- 50 sq. in. NFA per vent
- 8" round opening
- Filtered for added protection from weather, dust, and insect infiltration
- Limited lifetime warranty



## RVG 51

Square Galvanized



Model	Part #	PCS/ CTN	CTNS/ Pallet	Color
RVG51ML	RVG51000	9	15	Mill
RVG51BL	RVG51010	9	15	Black
RVG51BR	RVG51080	9	15	Brown
RVG51WW	RVG510G0	9	15	Weatherwood



- Heavy-duty galvanized steel construction
- Rust-free screen helps prevent insects from entering attic
- 50 sq. in. NFA per vent
- 8" round opening
- Limited lifetime warranty



## RVG 55

Slant Back Galvanized



Model	Part #	PCS/ CTN	CTNS/ Pallet	Color
RVG55ML	RVG55006	6	12	Mill
RVG55BL	RVG55016	6	12	Black
RVG55BR	RVG55086	6	12	Brown
RVG55WW	RVG550G6	6	12	Weatherwood



- Heavy-duty galvanized steel construction
- 50 sq. in. NFA per vent
- 8" round opening
- Optional filter for added protection from weather, dust, and insect infiltration
- Limited lifetime warranty



Filtered Slant Back Galvanized

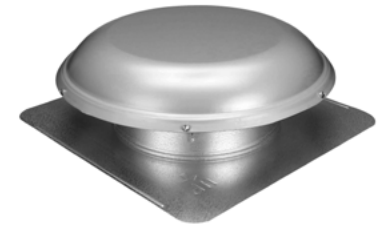
Model	Part #	PCS/ CTN	CTNS/ Pallet	Color
RVG55FMF	RVG55F06	6	12	Mill
RVG55FBL	RVG55F16	6	12	Black
RVG55FBR	RVG55F86	6	12	Brown
RVG55FWH	RVG55F96	6	12	White
RVG55FWW	RVG55FG6	6	12	Weatherwood

## B-144 Metal Dome

Round Galvanized



Model	Part #	PCS/ CTN	CTNS/ Pallet	Color
RVGLFMF	97690	1	30	Mill
RVGLFBL	97692	1	30	Black
RVGLFBR	97693	1	30	Brown
RVGLFWW	97691	1	30	Weatherwood



- Heavy-duty galvanized steel construction
- Rust-free screen helps prevent animals from entering attic
- 24" x 24" flashing
- 144 sq. in. NFA per vent
- Limited lifetime warranty



## 25" Metal Dome Replacement

Model	Part #	PCS/ CTN	Color
DOMGR	37658	1	Mill
DOMBL	37660	1	Black
DOMBR	37696	1	Brown
DOMWW	37661	1	Weatherwood

## RVAL 50

Slant Back Aluminum



Model	Part #	PCS/ CTN	CTNS/ Pallet	Color
RVA50ML	RVAL5000	10	16	Mill
RVA50BL	RVAL5010	10	16	Black
RVA50BR	RVAL5080	10	16	Brown
RVA50WW	RVAL50G0	10	16	Weatherwood

- Rust-resistant aluminum construction
- 50 sq. in. NFA per vent
- 8" round opening
- Limited lifetime warranty



## RVA 51

Square Aluminum



Model	Part #	PCS/ CTN	CTNS/ Pallet	Color
RVA51ML	RVA510000	12	15	Mill
RVA51BL	RVA510100	12	15	Black
RVA51BR	RVA510800	12	15	Brown
RVA51WW	RVA510G00	12	15	Weatherwood

- Rust-resistant aluminum construction
- Rust-free screen helps prevent insects from entering attic
- 50 sq. in. NFA per vent
- 8" round opening
- Limited lifetime warranty



## SLA

Slant Back Aluminum



Model	Part #	PCS/ CTN	CTNS/ Pallet	Color
SLAGR	85281	6	12	Gray
SLABL	85282	6	12	Black
SLABR	85283	6	12	Brown
SLAWW	85284	6	12	Weatherwood
SLAWH	85285	6	12	White

- Rust-resistant aluminum construction
- 1-piece base and throat is weather tight and adds strength
- 50 sq. in. NFA per vent
- 8" round opening
- Optional filter for added protection from weather, dust, and insect infiltration
- Limited lifetime warranty



Filtered Slant Back Aluminum

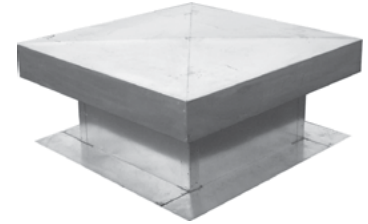
Model	Part #	PCS/ CTN	CTNS/ Pallet	Color
SLAGRF	85286	6	12	Gray
SLABLF	85287	6	12	Black
SLABRF	85288	6	12	Brown
SLAWWF	85289	6	12	Weatherwood

## EconoVent

Square Aluminum



Size	N.F.V.	Part#	QTY
12 x 12 in.	102 sq. in.	1212EV	1
14 x 14 in.	123 sq. in.	1414EV	1
16 x 16 in.	144 sq. in.	1616EV	1
18 x 18 in.	165 sq. in.	1818EV	1



## T-Top

Square Aluminum



Description	Aluminum	Galvanized	Bonderized	QTY
4 in. Standard Base	-	RJ4G	RJ4B	12
7 in. Standard Base	-	RJ7G	RJ7B	8
4 in. FHA Base	3TT4A	3TT4G26	-	1
4 in. FHA Base with Cap and Screen	-	3TT4G26-EC	-	1
7 in. FHA Base	3TT7A	3TT7G26	-	1
7 in. FHA Base with Cap and Screen	-	3TT7G26-EC	-	1



## Half Round Dormer

Square Aluminum



Size	N.F.V.	Part #
24 in. x 12 in.	100	BH24-1/8

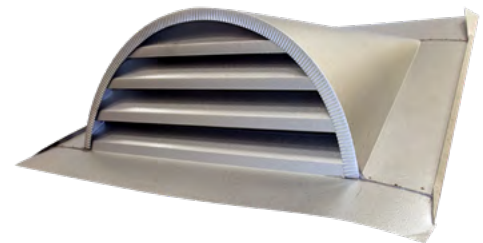
## Soft Flange Dormer

1/8 in. galvanized mesh.

Galvanized Steel + Soft Aluminum Flange for curved tile roofs



Size	N.F.V.	Part #
24 x 12 - Aluminum 2 sides	104	STDS24-2B-1/8
24 x 12 - Aluminum 3 sides	104	STDS24-3B

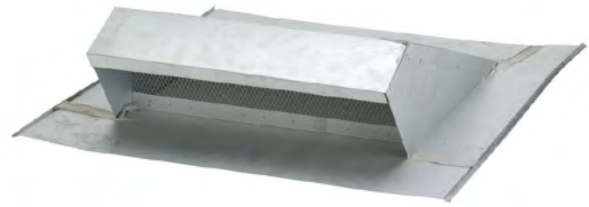


## Low Profile Dormer

Galvanized Steel · Hard Flange · 1/8 in. mesh



Size	N.F.V.	Part #
19 in. x 4 in.	46 sq. in.	LPDG19-1/8



## 24" Stealth Vent

39 sq. in. N.F.V. · 26 GA



Description	No Hem	Hemmed	QTY
Zinc	3STH24Z26ANH	3STH24Z26AB	50
Zinc w/ Black Mesh Screen	3STH24Z26ANHB	-	50
Sub-Base with Screen	3SBF24Z26STHS	-	10



## Weather Vent™



Patterned 4 foot Off Ridge Vent includes a screened external wind baffle provides superior air flow with maximum weather protection. U.S. Patent Number: 7,044,852 B2

Length	Galvanized	Galvalume	White	Brown	Black	N.F.A.	QTY
4 foot - 26 Gauge	63000	60014	63003	63002	63001	105	1
6 foot - 26 Gauge	-	-	-	17594	17603	156	2
8 foot - 26 Gauge	-	-	-	-	17604	207	2

Length	26 Gauge Galvalume	N.F.A.	QTY
Tile: 4 foot - With Baffle	63130	105	1
Tile: 4 foot - Without Baffle	60094	105	1
Tile: 8 foot - Without Baffle	60028	225	2
Baffle: 4' tile Vent	60626	-	10



## T-Top Sub-Base



Size	Part #	QTY
4 in. Sub Base - 28 Ga.	SJ4G	20

## Vent Caps



Size	Round	Oval	QTY
3 inch	RBVC3	-	24
4 inch	RBVC4	OBVC4	24
5 inch	RBVC5	-	12
6 inch	RBVC6	-	6

## Code Caps & Bases



Size	Top Only	CTN/QTY
4 inch cap	CC4T	24
6 inch cap	CC6T	24
8 inch cap	CC8T	24



Top



Oval



Round

## Gooseneck Vents

Sheltered internal air dampers provides one-way air venting with damper. Often used for kitchen or bath exhaust. Self flashing flanges make for easy installation on new or existing construction.



Description - Shingle Roof Only	Mill	White	Brown	Black	N.F.A.	QTY
4 in. - 26 Gauge Galvanized Steel	-	17640	17592	60027	12	12
10 in. 26 Gauge Galvanized Steel	22999	17644	17596	17605	30	6

Description	Shingle	QTY	N.F.A.	Tile	QTY
4 in. - 26 Gauge Galvalume Steel	60011	12	12	60566	6
6 in. - 26 Gauge Galvalume Steel	60635	6	18	98302	4
10 in. - 26 Gauge Galvalume Steel	60010	6	30	98301	4



One-way air venting damper



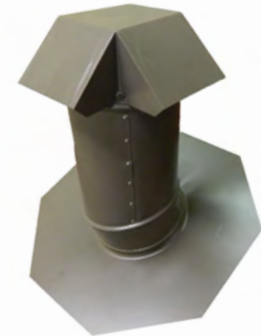
## Roof Jacks & Pipe Flashing

### Total Jack™

The only roof jack with an adjustable stack. Adjusts to fit most roof pitches. US Patents #8,534,013 B3 and #8,615,943 B2.



Size	Mill	Black	Brown	Weathered Wood	QTY
6 inch	JACK6GZ	JACK6BLK	JACK6BRN	JACK6WWD	7
8 inch	JACK8GZ	JACK8BLK	JACK8BRN	JACK8WWD	8



### Vent Adapter For 6 in. circular roof vent



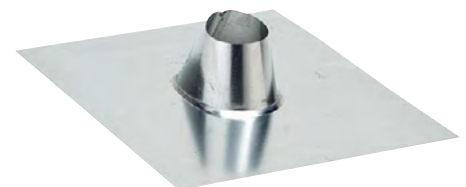
4 inch	6 inch	7 inch	QTY
559174	559176	559177	6



### FHA Pipe Flashing Mount directly over exposed vent pipes. 26 Gauge Galvanized Steel.



Description	Part #	QTY
1-1/2 inch - FHA Base	RJ15FHA-SP	25
2 in. - FHA Base	RJ2FHA-SP	25
3 in. - FHA Base	RJ3FHA-SL	10
4 in. - FHA Base	RJ4FHA-SL	10





## 12" Internal Brace Turbine



95 sq. in. NFA per 12" turbine

Model	Part #	PCS/ CTN	CTNS/ Pallet	Color
TIB12SML	TIBS0000	1	30	Mill
TIB12SBL	TIBS0100	1	30	Black
TIB12SBR	TIBS0800	1	30	Brown
TIB12SWW	TIBS0G00	1	30	Weatherwood

- Maintenance-free dual bearing system
- Adjustable base for pitches 3/12 - 12/12
- Aluminum construction is resistant to rust and corrosion
- Thermoplastic bracing system can flex in high winds and return to its original shape



## 12" External Brace Turbine



95 sq. in. NFA per 12" turbine

Model	Part #	PCS/ CTN	CTNS/ Pallet	Color
TOB12SML	TOBS0000	1	24	Mill
TOB12SBL	TOBS0100	1	24	Black
TOB12SBR	TOBS0800	1	24	Brown
TOB12SWW	TOBS0G00	1	24	Weatherwood



## 14" Internal Brace Turbine



132 sq. in. NFA per 12" turbine

Model	Part #	PCS/ CTN	CTNS/ Pallet	Color
TIB14SML	TIBS1400	1	24	Mill
TIB14SBL	TIBS1401	1	24	Black
TIB14SBR	TIBS1408	1	24	Brown
TIB14SWW	TIBS140G	1	24	Weatherwood



## 14" External Brace Turbine



132 sq. in. NFA per 12" turbine

Model	Part #	PCS/ CTN	CTNS/ Pallet	Color
TOB14SML	TOBS1400	1	24	Mill
TOB14SBL	TOBS1401	1	24	Black
TOB14SBR	TOBS1408	1	24	Brown
TOB14SWW	TOBS140G	1	24	Weatherwood



## Built-in Humidistat/Thermostat

1500 CFM • Ventilates attics up to 2,300 sq. ft. **High Efficiency** *Up to 74% Energy Savings*



Model	Part #	PCS/ CTN	CTNS/ Pallet	Color
<b>HE15WW</b>	53900	1	30	Weatherwood

- Variable speed ECM motor
- Less electricity consumption versus traditional motors
- Motor starts on low, quiet mode and ramps up in speed as needed
- On-board computer with temperature and humidity sensors monitors attic conditions
- Heavy-duty galvanized steel dome
- Limited lifetime warranty on parts, 5-year Replacement Plus™ Protection



## Pre-Wired Humidistat/Thermostat

1500 CFM • Ventilates attics up to 2,100 sq. ft.



Model	Part #	PCS/ CTN	CTNS/ Pallet	Color
<b>ASRHPGR</b>	53850	1	30	Gray
<b>ASRHPWW</b>	53849	1	30	Weatherwood
<b>ASRHPBR</b>	53848	1	30	Brown
<b>ASRHPBK</b>	53847	1	30	Black

- UL listed with thermal overload protection
- Heavy-duty galvanized steel dome
- Limited lifetime warranty, 5-year Replacement Plus™ protection



1170 CFM • Ventilates attics up to 1,650 sq. ft.



Model	Part #	PCS/ CTN	CTNS/ Pallet	Color
<b>PC12GR</b>	97711	1	30	Gray
<b>PC12WW</b>	97712	1	30	Weatherwood
<b>PC12BR</b>	97713	1	30	Brown
<b>PC12BK</b>	97714	1	30	Black

- UL listed with thermal overload protection
- Heavy-duty galvanized steel dome
- 10-year Limited lifetime warranty, 5-year Replacement Plus™ protection



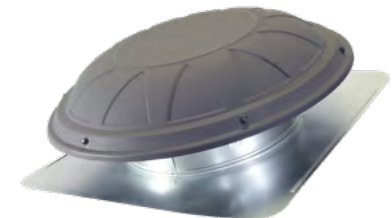
## Pre-Wired Thermostat

1170 CFM • Ventilates attics up to 1,650 sq. ft.



Model	Part #	PCS/ CTN	CTNS/ Pallet	Color
<b>RVP26GRP - Polypropylene Dome</b>	53828	1	30	Gray
<b>RV26BR</b>	53827	1	30	Brown
<b>RV26BK</b>	53871	1	30	Black
<b>RV26WW</b>	53829	1	30	Weatherwood
<b>RV26GR</b>	53830	1	30	Mill

- UL listed with thermal overload protection
- Heavy-duty galvanized steel dome
- 10-year Limited lifetime warranty, 5-year Replacement Plus™ protection



**RVP26GRP shown**



## Pre-Wired Thermostat

1320 CFM • Ventilates attics up to 1,900 sq. ft.



Model	Part #	PCS/ CTN	CTNS/ Pallet	Color
<b>RV28GR</b>	53833	1	30	Gray
<b>RV28WW</b>	53832	1	30	Weatherwood
<b>RV28BR</b>	53831	1	30	Brown

- UL listed with thermal overload protection
- Heavy-duty galvanized steel dome
- Limited lifetime warranty, 5-year Replacement Plus™ protection



1500 CFM • Ventilates attics up to 2,100 sq. ft.



Model	Part #	PCS/ CTN	CTNS/ Pallet	Color
<b>SV3000BR</b>	53853	1	30	Brown
<b>SV3000WW</b>	53854	1	30	Weatherwood
<b>SV3000BL</b>	53862	1	30	Brown

- UL listed with thermal overload protection
- Heavy-duty galvanized steel dome
- Limited lifetime warranty, 5-year Replacement Plus™ protection

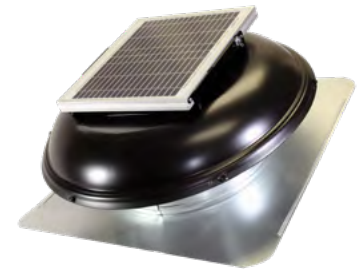


## Solar Powered Attic Ventilator



Model	Part #	PCS/ CTN	CTNS/ Pallet	Solar Panel	Wattage	Ventilates Attics Up To	Color
<b>SC8BL</b>	97310	1	18	Attached or Detached	10 watt	1,200 sq. ft.	Black
<b>NPSP8WW</b>	53510	1	18	Attached or Detached	10 watt	1,200 sq. ft.	Weatherwood
<b>9025TR</b>	97336	1	18	Attached	25 watt	2,600 sq. ft.	Black

- No electrical hook-up needed; runs completely from solar power
- Solar panel tilts and rotates for maximum sun exposure and energy collection (SC8BL & 9025TR)
- SC8BL and NPSP8WW solar panel can mount attached or detached
- Solar panel is wind, hail and impact resistant Per IEC 61512
- 5-year limited warranty; 2-year Replacement Plus™ protection (SC8BL & NPSP8WW)
- 5-year limited warranty on fan motors; 20-year on solar panel & fan housing (9025TR)



## Gable Mount Power Attic Ventilators



Model	Part #	Product	PCS/ CTN	CTNS/ Pallet	CFM	Ventilates Attics Up To
<b>APGH</b>	53320	Humidistat & Thermostat	1	64	1620	2,300 sq. ft.
<b>WCGB</b>	53319	Thermostat Only	1	64	1320	1,900 sq. ft.
<b>WCGA</b>	53315	Thermostat Only	1	64	1050	1,500 sq. ft.
<b>APG</b>	53316	Thermostat Only	1	64	1620	2,300 sq. ft.



- Model APGH, APG: Limited lifetime warranty; 5 year Replacement Plus protection
- Model WCGB: 10 year limited warranty; 5 year Replacement Plus protection
- Model WCGA: 5 year limited warranty; 2 year Replacement Plus protection
- Shutter sold separately



## Solar Powered Gable Mount Power Attic Ventilators



Model	Part #	PCS/ CTN	CTNS/ Pallet	Wattage	Ventilates Attics Up To	Color
<b>NPSG8</b>	53560	1	60	10 watt	1,200 sq. ft.	Black
<b>1125APV</b>	97337	1	60	25 watt	2,300 sq. ft.	Black



- No electrical hook-up needed; runs completely from solar power
- Solar panel is wind, hail and impact resistant Per IEC 61512
- Model: NPSG8: 5-year limited warranty; 2-year Replacement Plus™ protection
- Model: 1125APV: 5-year limited warranty on fan motor; 20 year limited warranty on solar panel and fan housing

## Automatic Gable Shutter



Fits all Air Vent Gable Ventilators

Model	Part #	PCS/ CTN	CTNS/ Pallet	Color	CFM
<b>SHT15W</b>	54703	1	160	White	1620



## Rectangular Gable Louver



Aluminum Wall/Gable-Mount Vent

Model	Part #	PCS/ CTN	Net Free Area (square inches)
8x8WH	RL808900	6	17.6/vent
12x12WH	81202	6	39.6/vent
12x18WH	81214	6	59.4/vent
14x24WH	81232	6	92.4/vent
18x24WH	81237	2	118.8/vent

- Aluminum construction
- Flush flange
- No screens

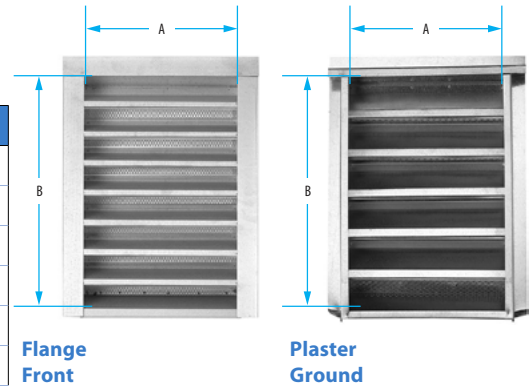


## Rectangular Gable Louver



Screened louvers produced in Front Flange and Plaster ground mounts.  
28 Gauge Galvanized Steel · 1/8 inch mesh

Description: A x B	N.F.V.	Part #	QTY
14 in. x 18 in. - Flange Front	110 sq. in.	GLFF1418G-1/8	10
18 in. x 24 in. - Flange Front	190 sq. in.	GLFF1824G-1/8	5
24 in. x 30 in. - Flange Front	317 sq. in.	GLFF 2430G-1/8	5
14 in. x 12 in. - Plaster Ground	65 sq. in.	GLPG1412G-1/8	10
14 in. x 18 in. - Plaster Ground	110 sq. in.	GLPG1418G-1/8	10
18 in. x 24 in. - Plaster Ground	190 sq. in.	GLPG1824G-1/8	5



## Rectangular Gable Louver



**Flange Center** 1/8 inch galvanized insect screen · Pack Quantity: 10

Size: A x B	N.F.V.	White
12 in. x 12 in.	50.5 sq. in.	GLFC1212WH
12 in. x 18 in.	79.0 sq. in.	GLFC1218WH
14 in. x 24 in.	131.6 sq. in.	GLFC1424WH



## Norwesco® Reversible Vent



30 Ga. Galvanized Steel · Reversible design for more flexible installation.

Size: A x B	N.F.V.	Mill	White	QTY
12 in. x 12 in.	62 sq. in.	553220	-	6
12 in. x 18 in.	100 sq. in.	-	553830	6
14 in. x 24 in.	162 sq. in.	-	553850	6



## Plastic Bath and Dyer Vent



4" Diameter

Model	Part #	PCS/ CTN	CTNS/ Pallet	Color
<b>BDVENT</b>	59427	4	42	Black

- Installs easily as a roof cap or side vent
- 3-7/8" stem length
- Dampened for one-way venting
- Screen protects against insects and debris; removable for dryer venting
- 3/12 - 12/12 roof pitch



## Plastic Stem Vent



Pack Quantity: 4

Size	Black	Dark Brown	Gray	White	QTY
<b>4 inch</b>	559427	559428	559425	559429	4
<b>5 inch</b>	559433	559434	-	-	4
<b>6 inch</b>	559439	559440	559437	-	4

<b>4 inch Plastic Roof Cap - No Stem - Black</b>	559415	6
<b>4 inch Plastic Roof Cap - No Stem - Dark Brown</b>	559416	6



## Galvanized Steel Bath and Dryer Vent



Model	Part #	PCS/ CTN	CTNS/ Pallet	Color
<b>GBDVENT4</b>	556060	1	96	Black
<b>GBDVENT6</b>	556064	1	57	Black
<b>GBDVENT8</b>	556070	1	34	Black

- Installs easily as a roof cap or side vent
- 3-7/8" stem length
- Dampened for one-way venting
- Screen protects against insects and debris; removable for dryer venting
- 3/12 - 12/12 roof pitch



## Metal Stem Vent



Size	Galv. - Stem Only	Black	Dark Brown	Gray
<b>4 inch</b>	556071	556060	556061	556074
<b>6 inch</b>	556072	556064	556065	-
<b>8 inch</b>	-	556070	556069	-

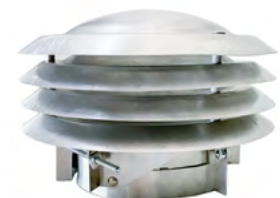


## Adjustable Type B Gas Cap



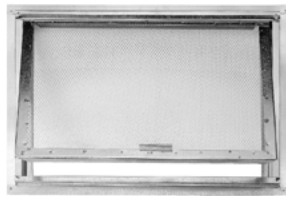
Model	Part #	PCS/ CTN	CTNS/ Pallet	Color	Info
<b>PTOP3-5</b>	53904	12	36	Mill	Fits Pipes 3 - 5"
<b>PTOP5-7</b>	53905	12	16	Mill	Fits Pipes 5 - 7"
<b>PTOP7-9</b>	53906	12	12	Mill	Fits Pipes 7 - 9"

- For LP and gas-fired appliances
- Rust-resistant aluminum construction
- Louvered openings help prevent weather debris and birds from entering vent
- 5 year limited warranty



## Ventilating Access Door

1/8 inch mesh · For crawl space access



18 in. x 24 in. | R.O.: 18.25 in. x 25 in.

Description	Part #	QTY
<b>Ventilating Access Door</b>	CHADS-1/8	10

## Tub Access Door

Pressure fit door · Drywall Frame



14 in. x 14 in.

Description	Part #	QTY
<b>Tub Access Door</b>	TA14DW	10

## 4 Inch Dryer Cap



Description	Part #	QTY
<b>Galvanized Steel</b>	DV4	14

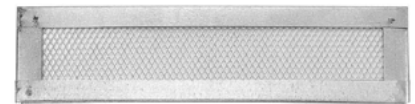
# Sidewall Vents

## Flat Screen Vent

Galvanized Steel · 1/8 in. mesh



Size: A x B	N.F.V.	Rough Opening	Part #	QTY
<b>16 in. x 4 in.</b>	23.7 sq. in.	14.5 in. x 2.5 in.	SCV164-1/8	25
<b>16 in. x 6 in.</b>	42.6 sq. in.	14.5 in. x 4.5 in.	SCV166-1/8	25
<b>16 in. x 8 in.</b>	61.5 sq. in.	14.5 in. x 6.5 in.	SCV168-1/8	25



## Two Way Vents

Galvanized steel · 1/8 in. mesh · Reversible flange for plaster or surface mount



Size: A x B	N.F.V.	Rough Opening	Part #	QTY
<b>14 in. x 4 in.</b>	28.4 sq. in.	13.75 in. x 3.25 in.	TW144-1/8	30
<b>14 in. x 6 in.</b>	44.8 sq. in.	13.75 in. x 5.25 in.	TW146-1/8	24
<b>14 in. x 8 in.</b>	62.2 sq. in.	13.75 in. x 7.25 in.	TW148-1/8	16



## Two Way Vent

With decorative floral plastic insert



Description	Part #	QTY
<b>14 in. x 6 in. Vent + Insert</b>	TWPIV-1/8	24
<b>Insert only</b>	PIV614	24



## 16" x 4"

Model	Part #	PCS/ CTN	CTNS/ Pallet	Color
<b>EV16424MF</b>	84126	24	108	Mill
<b>EV16424WH</b>	84226	24	108	White
<b>EV16424BR</b>	84228	24	108	Brown



- Available in aluminum construction
- 1/8" mesh aluminum screen
- NFA: 28 sq. in. per vent



## 16" x 6"

Model	Part #	PCS/ CTN	CTNS/ Pallet	Color
<b>EV16624MF</b>	84115	24	84	Mill
<b>EV16624WH</b>	84215	24	84	White
<b>EV16624BR</b>	84217	24	84	Brown

## 16" x 8"

Model	Part #	PCS/ CTN	CTNS/ Pallet	Color
<b>EV16824MF</b>	84210	24	60	Mill
<b>EV16824WH</b>	84211	24	60	White
<b>EV16824BR</b>	84212	24	60	Brown
<b>EV16824GA</b>	84213	24	60	Mill

- Available in aluminum construction
- 1/8" mesh aluminum screen
- NFA: 42 sq. in. per vent



- Available in aluminum or galvanized steel construction
- NFA: 56 sq. in. per vent
- 1/8" mesh aluminum screen



## Mini Louver Aluminum

Model	Part #	NFA (sq. in.)	PCS/ CTN	Color	Size
<b>MLM2MF</b>	50001	0.47/pc.	36	Mill	2 inch
<b>MLM3MF</b>	50002	1.34/pc.	36	Mill	3 inch
<b>MLM4MF</b>	50003	2.88/pc.	36	Mill	4 inch



- Tooled aluminum; die-stamped grill
- No screen
- 6 pieces per bag; six bags per carton

## Mini Louver Aluminum, with Screen

Size	N.F.V.	Part #	QTY.
<b>2 inch</b>	0.45 sq. in.	559111	36
<b>2-1/2 inch</b>	1.2 sq. in.	559112	36
<b>3 inch</b>	1.7 sq. in.	559001	36
<b>4 inch</b>	3.5 sq. in.	559002	36

## Mini Louver Aluminum, no Screen

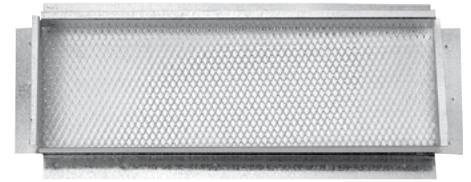
Size	N.F.V.	Part #	QTY
<b>2 inch</b>	0.47 sq. in.	ML2	100
<b>3 inch</b>	1.34 sq. in.	ML3	50
<b>4 inch</b>	2.88 sq. in.	ML4	20



## Soffit Vent Stucco Ready · 1/8 inch mesh



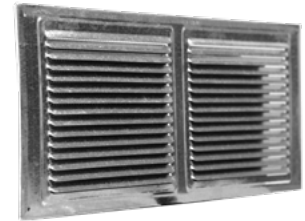
Size: A x B	N.F.V.	Rough Opening	Part #	QTY.
14 in. x 5 in.	52.1 sq. in.	14.5 in. x 5.5 in.	SV145-1/8	26
22 in. x 3 in.	51.4 sq. in.	22.5 in. x 3.25 in.	SV223-1/8	9



## Flush Mount Soffit Vent 1/8 inch Mesh · Pack Quantity: 12



Description	N.F.V.	Galvanized	Brown	White	QTY.
16 in. x 6 in.	40 sq. in.	558006	556147	556447	12
16 in. x 8 in.	58 sq. in.	558007	556148	556448	12



## Flush Mount Soffit Vent With Damper · 1/8 inch Mesh · Pack Quantity: 12



Description	N.F.V.	Galvanized	Brown	White	QTY.
16 in. x 4 in.	24 sq. in.	558025			12
16 in. x 8 in.	58 sq. in.	558027	556163	556463	12



with manual damper

## Eave Vent Stucco or Straight Flange · 1/8 inch mesh



Size	N.F.V.	Galvanized	Bonderized	Brown	QTY.
22 in. x 3 in. - 1/8 mesh - STU	34.3 sq. in.	EV223-1/8	-	25	25
22 in. x 3 in. - 1/8 mesh - REG	34.3 sq. in.	-	556017	50	50
22 in. x 3 in. w/Louvers - REG	34.3 sq. in.	-	556007	50	50



STU = Stucco Flange  
REG = Straight Flange

## Perforated PVC Continuous Soffit Retrofit - Double Leg Return



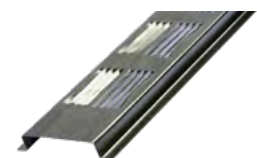
Model	Part #	Length	PCS/ CTN	Color
SV351WH	90320	8'	50	White



## Louvered Aluminum Continuous Soffit Retrofit - Double Leg Return



Model	Part #	Length	PCS/ CTN	Color
SV201MF	84300	8'	30	Mill
SV201WH	84303	8'	30	White
SV201BR	84304	8'	30	Brown



## Louvered Aluminum Continuous Soffit



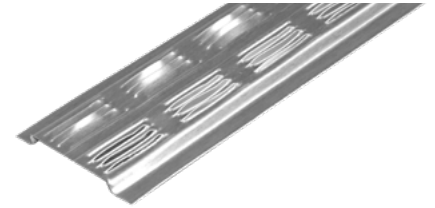
Model	Part #	Length	PCS/ CTN	Color
SV202WH	84307	8'	30	White



## Continuous Soffit Vent



Description	N.F.V.	Mill	Black	Brown	White	QTY.
Aluminum	9 sq. in./ft.	556004	556014	556018	556019	30
Plastic	8.2 sq. in./ft.	-	-	559006	559007	75



# Intake Vents

## The Edge™ Vent



Model	Part #	Length	PCS/ CTN	CTNS/ Pallet	Color
EVI	83000	4'	10	15	Black

- Installs on the roof's edge
- Designed for homes with or without overhangs
- 9 sq. in. NFA per linear ft.
- 3/12 pitch or steeper
- Limited lifetime warranty; 5-year Replacement Plus™ protection
- Ring-shanked nails included
- Passed 30-day ice dam testing



## Pro Flow™ Vented Drip Edge



Model	Part #	Length	PCS/ CTN	Color
VDEWH	95023	10'	10	White

- Designed for homes without overhangs
- Rust-resistant aluminum construction
- 9 sq. in. NFA per linear ft.



## VSR92 9/16" Vented Soffit Receiver



Model	Length	PCS/ CTN	White	Hickory
VSR92	10'	20	VSR92280	VSR92238

## VSR1 1" Vented Soffit



Model	Part #	Length	PCS/ CTN	Color
VSR1	95023	10'	VSR1280	VSR1238



## Automatic Foundation Vent



Model	Part #	PCS/ CTN	CFH	Color
STPBL/LO	94000	1	11,160 cubc ft./hr	Black

- 8" x 16" to fit into a standard block opening
- Completely screened, front & back
- No mortar required for installation
- Totally enclosed, thermally protected motor
- 3000 rpm, 0.7 amps, 115-volts
- Honeycomb shaped grill
- 5 year limited warranty



## Series 6, High Output



Model	Part #	PCS/ CTN	CFH	Color
TV6LBHPBL	94004	1	11,160 cubc ft./hr	Black

- 8" x 16" to fit into a standard block opening
- Completely screened, front & back
- No mortar required for installation
- Totally enclosed, thermally protected motor
- Easy to install with the included hardware
- Low voltage unit – no electrician required
- 3000 rpm 1.0 amps, 24-volts
- 5 year limited warranty

*\*Series 5 & 6 Requires controls kit – sold separately*



## Series 5, High Output



Model	Part #	PCS/ CTN	CFH	Color
TV5LBHPBL	94002	1	11,160 cubc ft./hr	Black

- 8" x 16" to fit into a standard block opening
- Completely screened, front & back
- No mortar required for installation
- Removable frame allows for easy installation into siding (vinyl, fiber cement, etc.)
- Totally enclosed, thermally protected motor
- Low voltage unit – no electrician required
- 3000 rpm 1.0 amps, 24 volts
- 5 year limited warranty

*\*Series 5 & 6 Requires controls kit – sold separately*



## Controls Kit



Model	Part #	PCS/ CTN
LVKIT	94001	1

- Damp weather shutoff – dual control adjusts temperature & humidity at intake vent
- Humidistat – turns unit on to mitigate humidity
- Power Supply Unit – 24 VAC output, operates up to 3 power vents
- Control Cables – 25' attaches all control kit units together
- Kit required on all Series 5 and 6 Low Voltage Foundation Vents (needs accessible GFCI outlet)



## Plastic Vent Well



Model	Part #	PCS/ CTN
VWBL	VWBL	1

- The vent well provides space for below-grade foundation vents and helps keep water from the crawlspace
- An alternative to unsightly, rusted metal vent wells
- No rust thermoplastic construction



## Replacement Automatic Foundation Vent



Model	NFA (sq. in.)	PCS/ CTN	CTNS/ Pallet	Color
RABL	50	10	16	Black
RABR	50	10	16	Brown
RAGR	50	10	16	Gray



- Automatically opens in warm weather and closes in cold weather
- Installs quickly with just a screwdriver
- Replaces old, unattractive vents easily
- 5 year limited warranty



## Manual Replacement Foundation Vent



Model	NFA (sq. in.)	PCS/ CTN	CTNS/ Pallet	Color
RMBL	50	10	16	Black



- Same housing as our automatic vents utilizing manual lever instead of automatic coil
- Easy installation
- Replaces old, unattractive vents easily



## Stamped Aluminum Sliders



Model	Part #	NFA (sq. in.)	PCS/ CTN	CTNS/ Pallet	Color
FA109	FA109000	36	12	60	Mill



- Aluminum screen
- Adjustable sliding damper

## Stamped Foundation Vent Stucco Reveal



### Galvanized

Description	N.F.V.	Part #	QTY
14 x 6 in. - 1/8 mesh	51 sq. in.	FV146G-1/8	25

### Bonderized

14 x 6 in. - 1/4 mesh	51 sq. in.	FV146B-1/8	25
-----------------------	------------	------------	----



## Damper Doors • Foundation Vent Clips



Description	Part#	QTY.
Vent-Aire Door	559217	80
Norwesco - PFV6-8	596140	72

## Rim Vent Pack Quantity: 24



Description	N.F.V.	Part #	QTY
16 in. x 8 in. - White	62 sq. in.	559408	8

## Pour-In-Place Foundation Vent

Description	N.F.V.	Color	Part#	QTY.
<b>PFV-6-8 Combo</b>	100 sq. in.	Gray	596037	12
<b>PFV-6-8 Combo - with damper door</b>	100 sq. in.	Gray	596137	12
<b>6 in. - no door</b>	72.5 sq. in.	Gray	559021	20
<b>6 in. - with damper door</b>	72.5 sq. in.	Gray	559023	20
<b>6 in. - no door</b>	72.5 sq. in.	Black	559020	20
<b>6 in. - with damper door</b>	72.5 sq. in.	Black	559022	20
<b>8 in. - no door</b>	72.5 sq. in.	Gray	559027	15
<b>8 in. - no door</b>	72.5 sq. in.	Black	559026	15
<b>8 in. - with damper door</b>	72.5 sq. in.	Black	559028	15
<b>10 in. - with damper door</b>	72.5 sq. in.	Gray	559035	12



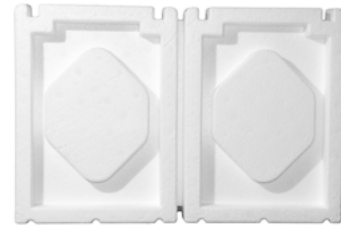
## Foam Plugs Sold in Pairs



DVBPSM-EA



DVBP



DVBPXL

Description	Part#	QTY.
<b>Lawrence - 5.5 in. x 7.5 in</b>	DVBPSM-EA	45
<b>Vent-Aire - 6.5 in. x 7.75 in.</b>	DVBP	40
<b>Norwesco - 6.5 in. x 8.75 in.</b>	DVBPXL	36

## Plastic Dampers and Sliders

Model	Part #	NFA (sq. in.)	PCS/ CTN	CTNS/ Pallet	Color	Style
<b>PLDPBL</b>	93800	64	12	35	Black	Folding Damper
<b>PLSLBL</b>	93805	45	12	35	Black	Sliding Damper
<b>JMSLBL</b>	93808	60	12	28	Black	Jumbo Vent Slider

PLDPBL

PLSLBL

JMSLBL



### Folding & Sliding Dampers

- Standard 16" X 8"

### Jumbo Vent Slider

- Designed for use with oversized bricks
- 16" X 9"





Professionally repair holes left by old roof vents or roof deck damage up to 8 in. x 8 in.

Description	Part #	No./Carton	Cartons/Pallet
Kwik-Plug™ Steel/OSB Roof Repair	KWIKPLUG	12	108

- Eliminates the need for cutting plywood
- Constructed of durable galvanized steel and OSB
- Resists cracking in extreme cold and weakening in heat
- Measures 8 in x 8 in
- Easily installs with 8 nails

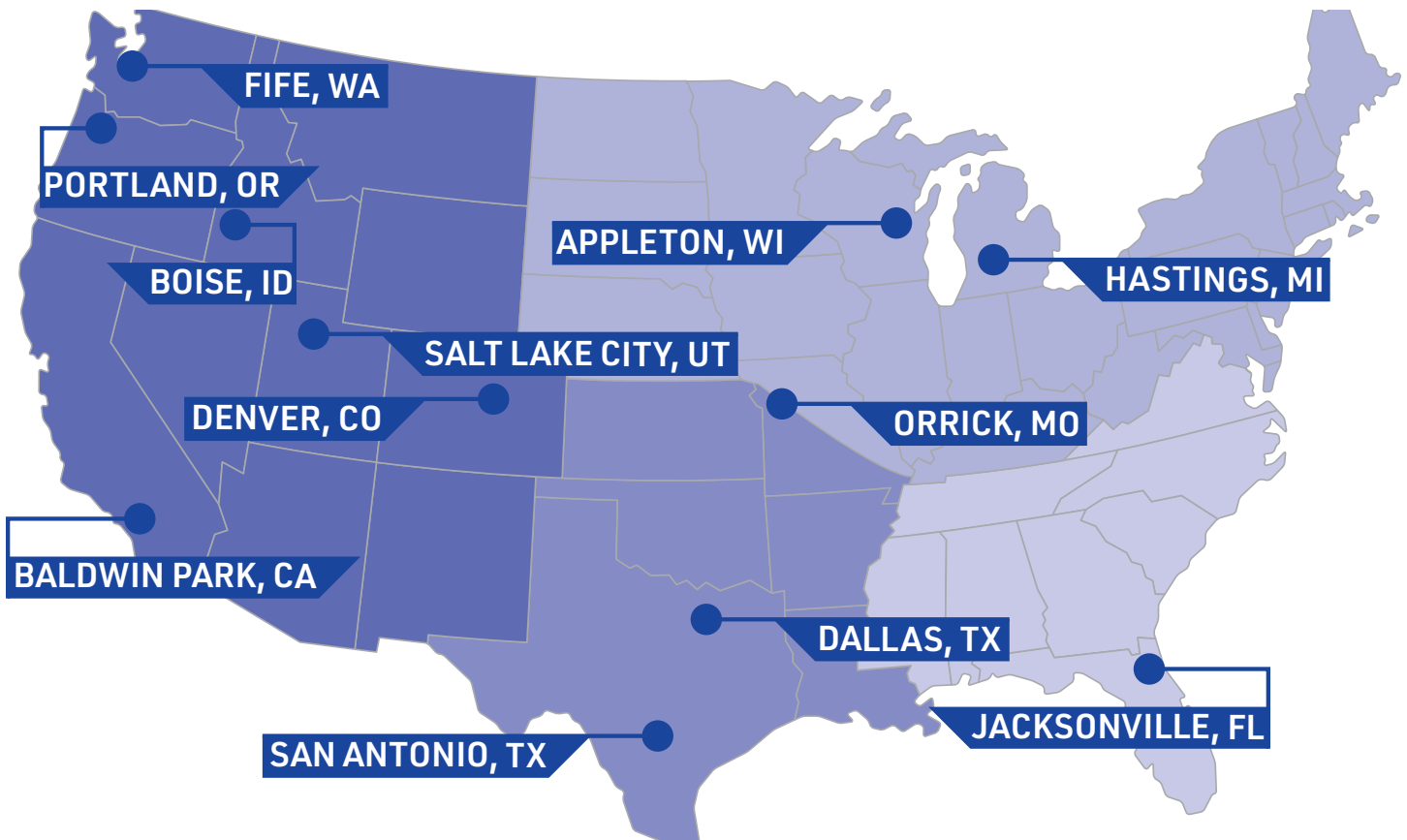


# GIBRALTAR

BUILDING ACCESSORIES DIVISION

## GIBRALTAR BUILDING ACCESSORIES DIVISION

"Provider of Quality Building Accessories, Built Upon Regional Expertise"



- ✓ Trims & Flashing
- ✓ Metal Roofing
- ✓ Ventilation
- ✓ Drywall Bead
- ✓ Stucco & Plaster
- ✓ Soffit & Fascia
- ✓ Steel Framing



**Leading Industry Education Since 1998**

- **Why Ventilate the Attic?**
- **Picking the Right Vent for the Project**

- **How Much Attic Ventilation is Needed?**
- **Case Studies & Field Stories + More!**

*visit our website for the current schedule and locations near you!*

Attic Ventilation: Ask the Expert™ is a free seminar focusing on the importance of proper attic ventilation. This seminar is a technical overview of the various benefits of a balanced attic ventilation system and how to properly specify and install the correct ventilation products needed for a balanced system. The program includes installation tips, how to calculate if there is enough ventilation, real-life case studies, answers to frequently asked questions, and a Q & A period.



## AIRVENT UNIVERSITY

Leading Industry Education Since 1998

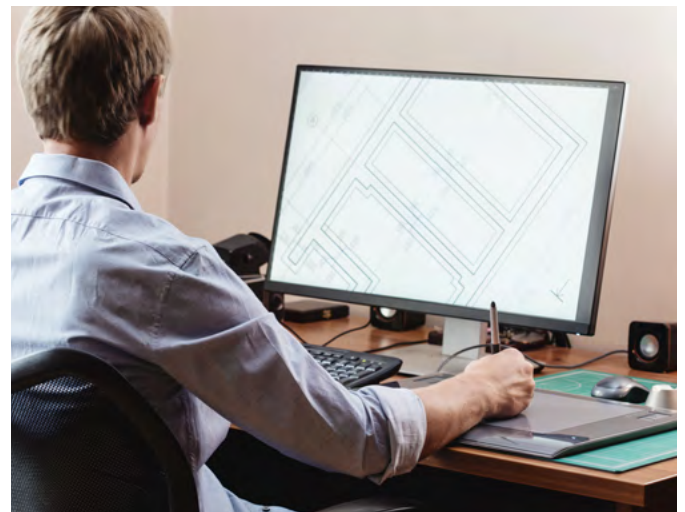
Every month on campus of AVU on our website we take a deeper dive into topics requested by the roofing industry -- including tricky attics to ventilate. The Lesson Plans and 5-Question Pop Quizzes become handy year-round resources.



Our monthly podcast is an extension of our popular educational seminar. Topics are suggested by roofing pros and episodes often feature 1-on-1 interviews. Listen to valuable insights straight from the source.



WE KNOW AIR FLOW  
**AIRVENT**



Our technical team at AirVent can help you troubleshoot hard-to-vent attics. We may not have a solution for every roof out there, but we promise to try.

**Reach out at 800-AIR-VENT  
(800-247-8368) with any questions and  
assistance you may require!**

